

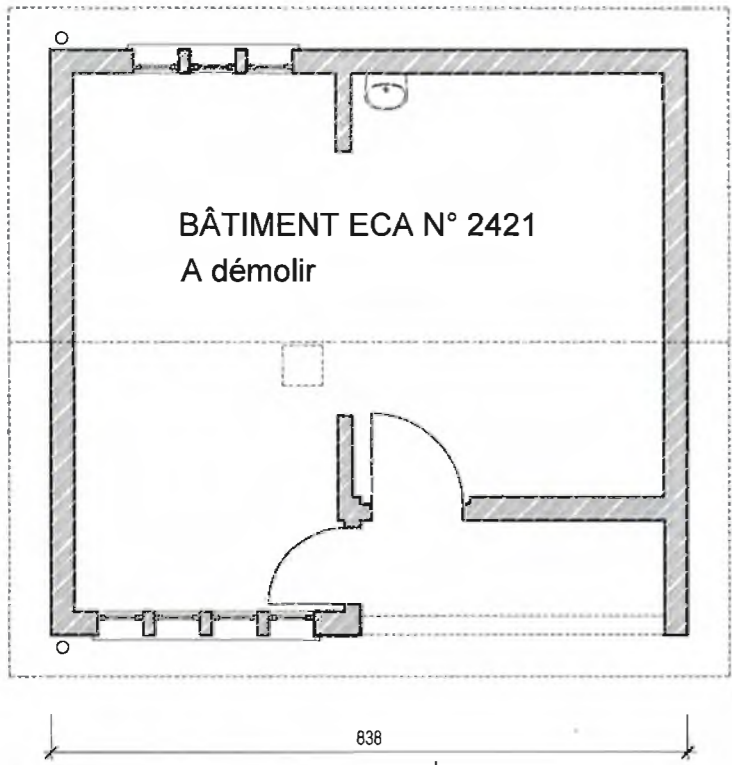
EXISTANT
 A CONSTRUIRE
 A DEMOLIR

Propriétaire parcelle n° 387 et Bénéficiaire du DDP n° 3908 :

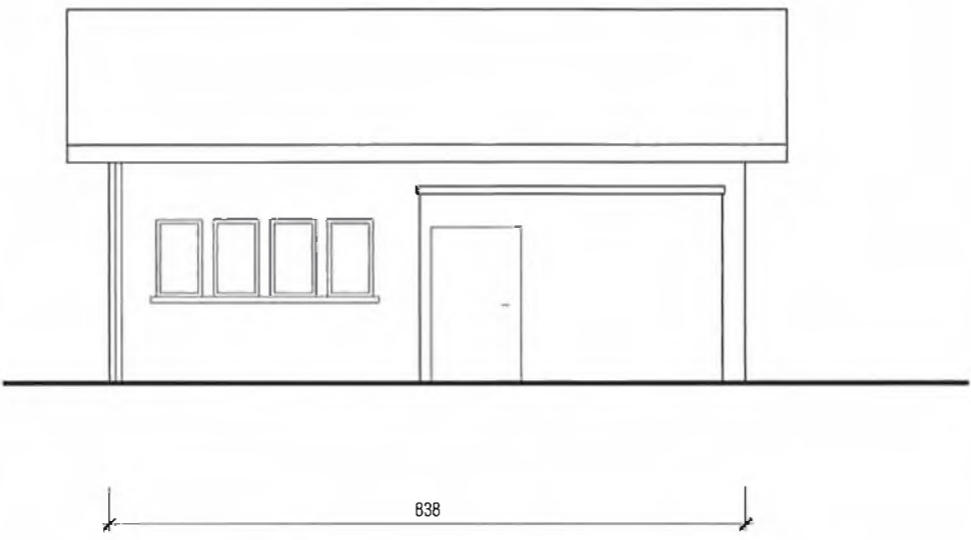
[Signature]
 EHC-Hôpital de Morges
 Ignacio Rodicio - Directeur
 Département Infrastructures
 Chemin du Crêt 2
 1110 Morges

Architecte :

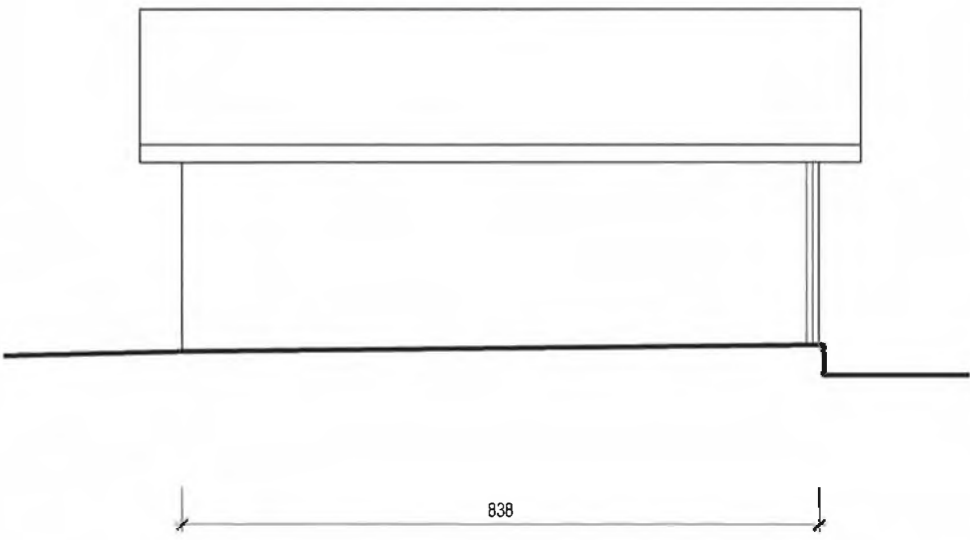
ARCHI-2 ATG Sàrl
 Atelier d'architecture HES
 Membre GPA & Swiss Engineering
 Ch. de l'Orgevaux 3 - 1053 Cugy
 archi2atg@bluewin.ch Tél. +41 (0)21 653 60 82



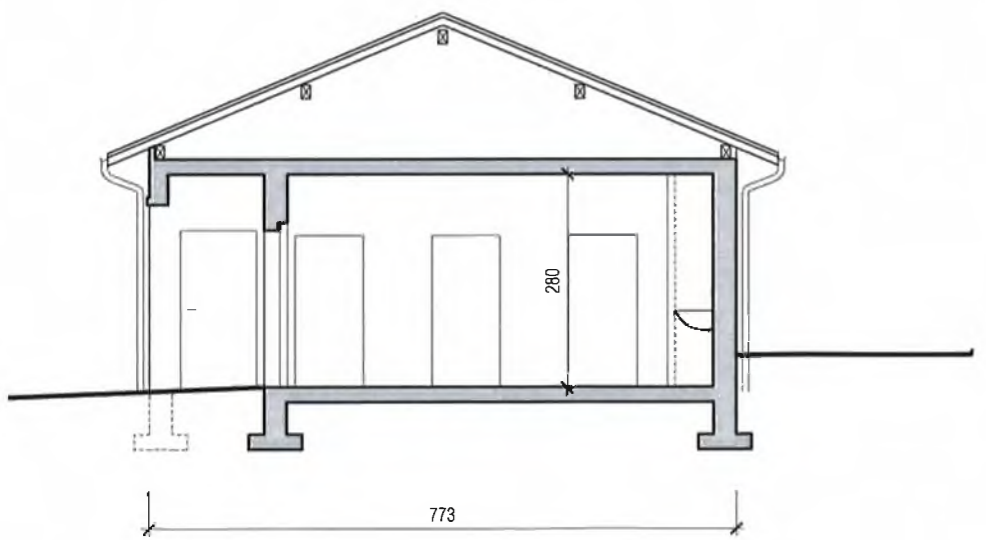
PLAN



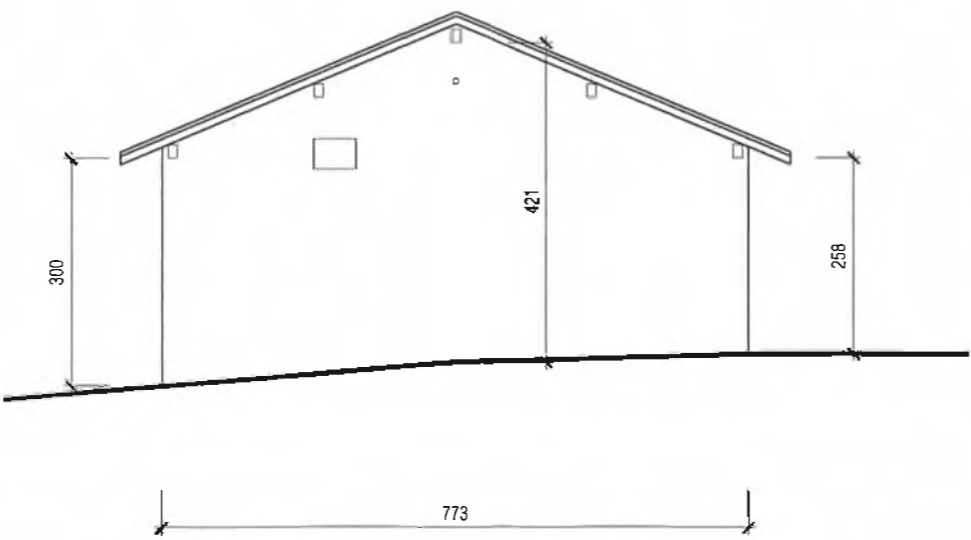
FACADE SUD



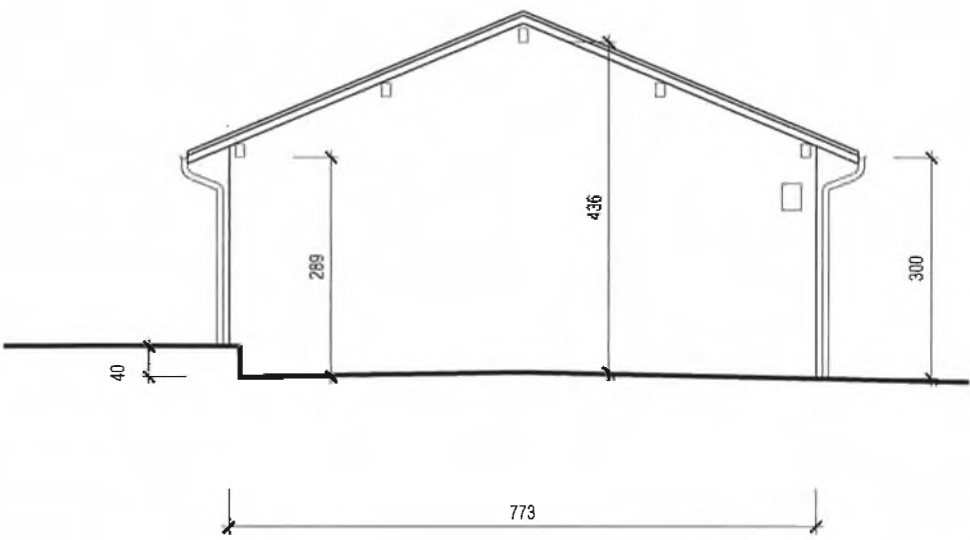
FACADE NORD



COUPE AA



FACADE EST



FACADE OUEST